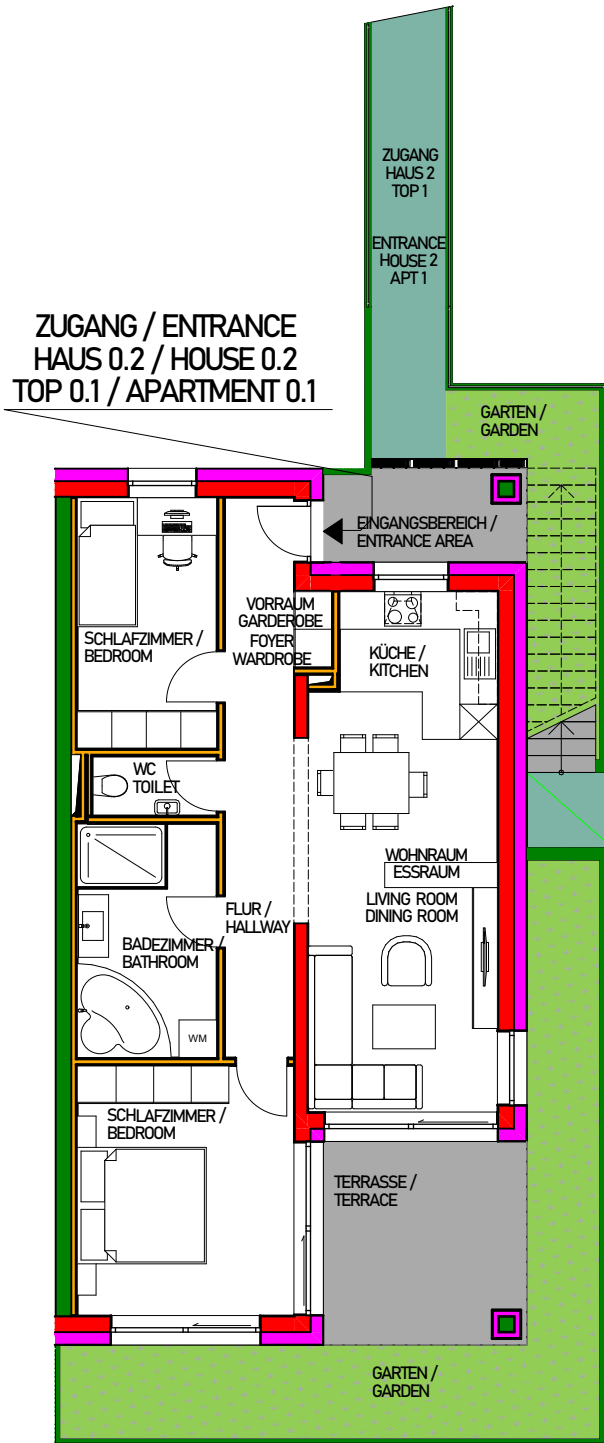


WIENERSTRASSE 9, A-7082 DONNERSKIRCHEN
 ÜBERSICHTSPLAN
 HAUS 0.2
 TOP 0.1 - ERDGESCHOSS

LAYOUT
 HOUSE 0.2
 APARTMENT 0.1 - GROUND FLOOR



HOUSE 0.2 -
 APARTMENT 0.1
 ca. 68 m²
 GARTEN - TOP 0.1
 ca. 29 m²
 TERRASSE - TOP 0.1
 ca. 15 m²
 ENTRANCE - TOP 0.1
 ca. 6 m²
 PARKING LOT 1
 ca. 13 m²
 PARKING LOT 2
 ca. 14 m²

HAUS 0.2 - TOP 0.1
 ca. 68 m²
 GARTEN - TOP 0.1
 ca. 29 m²
 TERRASSE - TOP 0.1
 ca. 15 m²
 ZUGANG - TOP 0.1
 ca. 6 m²
 PARKPLATZ 1
 ca. 13 m²
 PARKPLATZ 2
 ca. 14 m²



Terra Atlas

IMMOBILIEN GMBH